



YOUR AGILE AND THOROUGH CARE PARTNER FOR ANIMAL HEALTH

SonoScape's Integrated Endoscopy Solutions for Veterinarians



SonoScape Medical Corp.
2F, 12th Building, Shenzhen Software Park Phase II, Keji Middle
2nd Road, Shenzhen, China
Tel: +86-755-26722890 Fax: +86-755-26722850
Email: market@sonoscape.net www.sonoscape.com

ISO 13485 CE 0197

V-200020221208



Inheriting the technology know-how from larger, successful models and designed for frontline veterinarians, V-2000 is a versatile Full High Definition (FHD) video system center that is compatible with flexible, rigid and fiber endoscopes, therefore encompassing a large array of animal care needs.

The optical excellence you called for



2-LED



50000+ hours

Paired light source employs a 2-LED light source with a lifespan of over 50,000 hours. You will obtain a noticeably brighter, high-quality image with minimal light loss and maximal mucosal details. Small vessels can be clearly observed under the enhanced White Light mode.

The visual field you can truly trust

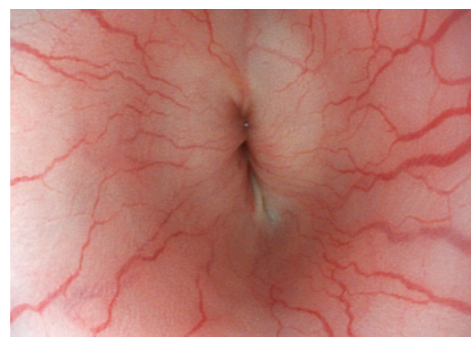
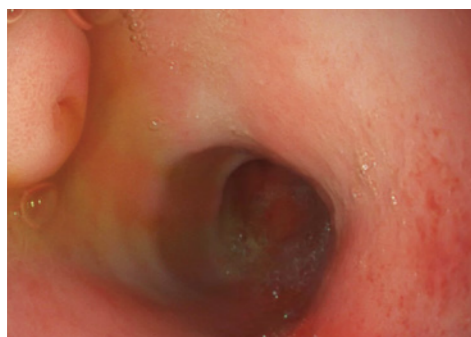


Powerful Chip



FHD 1080P

V-2000's powerful chip allows an optimal image adjustment without delay, and outputs true-to-color images. This outstanding and stable visual field creates an excellent visualising experience, enabling easier and finer operations.



The interaction you feel at your fingertips

Thanks to the one-of-a-kind tactile control panel, interacting with V-2000 can't be easier. The system comes with all essential features adjustable directly from the front panel, with a one-tap-screen-lock.

V-2000, Veterinary Video System Center

Video output	1080p, DVIx2, SDIx2
Light source	2-LED lamps, ≥50,000 hours
User interface	8-inch touch screen
Storage	Picture / Video recording on portable USB memory
Digital zoom	Up to x4.0
White balance	Auto & memory
Brightness adjustment	Automatic gain control (GAIN)
IRIS	PEAK / AVE / AUTO (Flexible endoscope)
	Full / Wide / Circular screen (Rigid endoscope)
Brightness	Auto/Manual, 1-19 levels
Transillumination	6-8 seconds
CHb hemoglobin enhancement	Yes
Picture by picture (PBP)	Yes
One step connection/ Hot plugging	Yes / Yes
Voltage	100-240 V AC
Frequency	50/60 Hz
Rated input	350 VA
Dimensions [L x W x H / weight]	492 x 373.5 x 205 mm / 15.5 Kg



Introducing an agile solution. V-2000 offers a series of simple to set up, cross-compatible flexible endoscopes that answer the needs of different species, from small to large furry companions, and from farm to exotic animals.



Small, Medium, and Large Animals

The boosted maneuverability that makes it an extension of your hand



A shorter bending radius coupled with a large field of view allows you to intubate and reach efficiently, and to observe to the full extent. Diagnose and treat with confidence, thanks to the scope's water jet function and large instrument channel.



One-Step connection, and real waterproof, the V series scopes can be plugged and unplugged, cleaned and disinfected straightforwardly, at only a minimal risk of water damage by mismanipulation.



An upgraded scope tubing with a light-weight handle, the V series scopes offer great comfort and ease during routine and complex operations, helping to shorten the procedure time.

V Series Flexible Endoscopes

	V-10L	V-10M	V-10S
Field of view	145°	145°	145°
Depth of field	2-100 mm	2-100 mm	2-100 mm
Distal End Dia.	12.0 mm	9.0 mm	5.4 mm
Insertion Dia.	12.5 mm	10.5 mm	6.6 mm
Instrument Dia.	3.8 mm	2.8 mm	2.2 mm
Angulation	U/D: 200° /180°	U/D: 210° /90°	U/D: 210° /160°
	L/R: 160° /160°	L/R: 120° /120°	L/R: 120° /120°
Working length	3300 mm	1500 mm	1100 mm

High performing, functional and ergonomic, SonoScape's camera heads are equipped with CMOS image sensor. Supporting 60FPS FHD digital signal, they are designed to offer a brilliant user's experience.

 **Universal Coupling**



The configuration and versatility you enjoy

We provide different models to cover all the scenarios under rigid scope usage. Simply use pre-sets to switch between the types of operations and the camera head's smart light adjustment technology will do the rest.

The international standard C-mount couplers further guarantees better compatibility with the most common telescopes seen on the market. The camera heads are also IPX7 waterproof.

Camera Heads

Lens mount	Universal Coupling
Pickup system	CMOS image sensor
Types of camera head	
10.110.201V	Focal lens 18-38 mm, up to x2.0
10.111.201V	Focal lens 18 mm
10.112.201V	Focal lens 38 mm
Type of protection against electric shock	Type BF
Degrees of protection against harmful liquid	IPX7

Introducing SonoScape's small diameter rigid scopes, perfect for a variety of medical specialities and offering endless minimally invasive therapeutic possibilities.



The Sublime match you can ever imagine

Designed to meet the key requirements for any successful procedure, our rigid scope portfolio is the epitome of consistently clear visual field and exceptional first-class FHD image quality. Pair it with SonoScape V-2000, to experience this sublime match and the efficiency it brings to your operation room.

Rigid Endoscopes

 **Laparoscopes** 


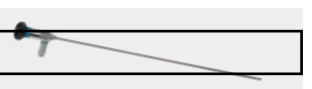
Endoscope Ø	Working length	Direction of view	Field of view
10.0 mm HDscope	307 mm	0°	wide angle
10.0 mm HDscope	307 mm	30°	wide angle
5.0 mm HDscope	312 mm	0°	wide angle
5.0 mm HDscope	312 mm	30°	wide angle

 **Arthroscopes** 

Endoscope Ø	Working length	Direction of view	Field of view
4.0 mm HDscope	175 mm	0°	wide angle
4.0 mm HDscope	175 mm	30°	wide angle
4.0 mm HDscope	175 mm	70°	wide angle

 **Hysteroscopes** 

Endoscope Ø	Working length	Direction of view	Field of view
2.9 mm HDscope	302 mm	0°	wide angle
2.9 mm HDscope	302 mm	30°	wide angle

 **Cystoscopes** 

Endoscope Ø	Working length	Direction of view	Field of view
4.0 mm HDscope	302 mm	0°	standard
4.0 mm HDscope	302 mm	12°	standard
4.0 mm HDscope	302 mm	30°	standard