



urgent care/er endoscopy


AURORA
ER

 **routledge**



Rutledge Medical AURORA ER™

Clarity. Confidence. Control.

Every endoscopic procedure you perform hinges on one thing—vision. Whether it's your go-to diagnostic tool or the access point for treatment, you deserve equipment engineered to deliver exceptional image quality and streamline your workflow.

The AURORA ER was built with one goal: to support your care with tools that offer real clinical and procedural differentiation. From high-definition visualization to intuitive design, every detail helps you work more precisely, efficiently, and with less stress.

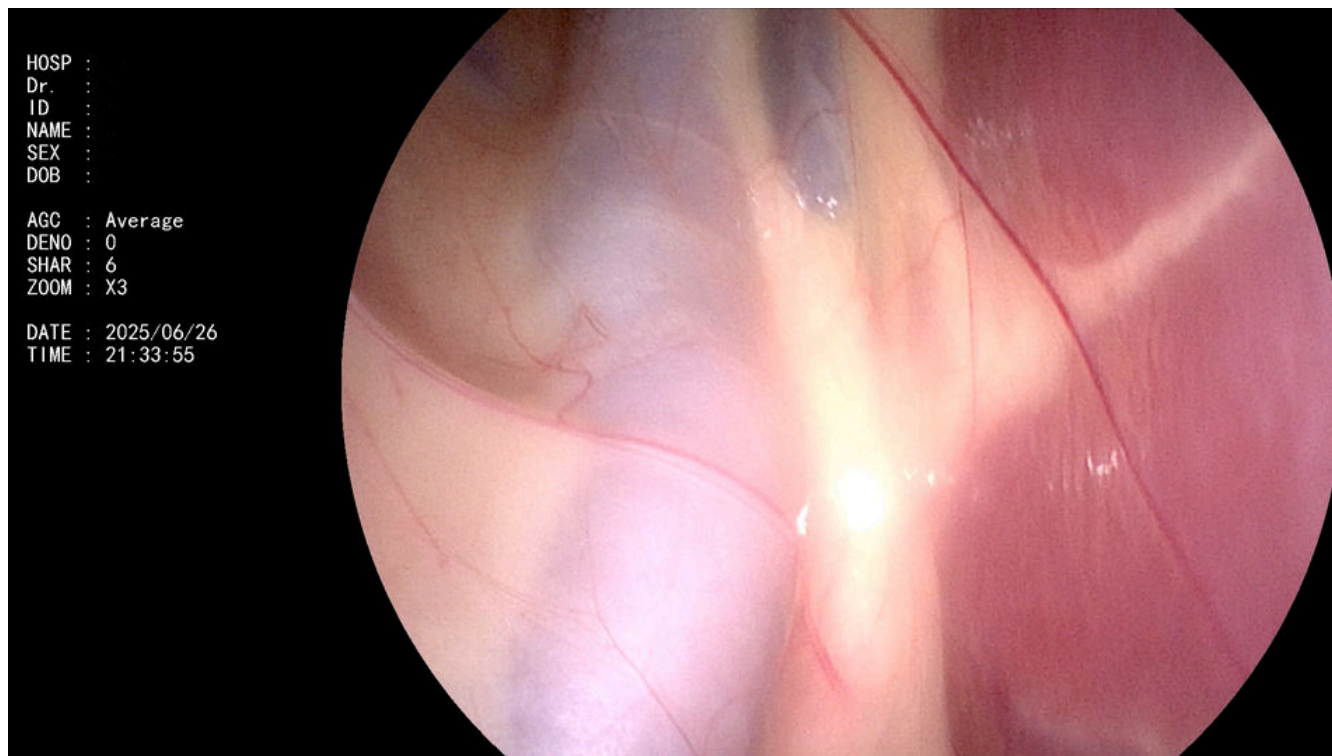
Inspired by the trust and connection you build with each patient—from the anxious dachshund to the aging feline—this collection is crafted for those who dedicate their days to the well-being of companion animals.

Because when your focus is on your patients, ours is on supporting your vision—with solutions that move as seamlessly as you do.

advancing companion medicine

Image Definition That Is Unmatched

AURORA ER



Sharper Imaging. Smarter Outcomes.

The **AURORA ER** captures what others can't. With **75 frames per second**, it minimizes rolling shutter artifact (RSA) and eliminates the ghosting effect common in lower-resolution systems—**delivering smooth, stable imaging throughout every procedure.**

Unlike many systems that record in lower quality than what's displayed, **AURORA ER** records in **true 1080p HD**, preserving exactly what you see on screen. **No resolution drop.** No surprises.

At the heart of its performance is a **CMOS chip-on-tip sensor**, packing **millions of pixels** directly into the endoscope head. This advanced technology delivers crisp, **high-definition imaging** far beyond the capabilities of standard-definition scopes, which typically offer fewer than 500,000 pixels.

Greater clarity means **earlier detection** of subtle abnormalities, more **informed decisions**, and **better outcomes**—for every patient and every procedure.

2 Million

Pixels

Endoscopes For All Animals

AURORA ER

In emergency foreign body cases, accurate visualization is everything. Whether you're retrieving a tracheal obstruction or navigating the GI tract, high-definition optical clarity gives you the confidence to act quickly, minimize trauma, and make precise, informed decisions—when every moment counts.



Precision When the Clock Is Ticking

Foreign body retrieval in emergency cases demands more than speed—it requires total control and crystal-clear visualization. With TrueColor™ high-definition imaging, an integrated forward water jet, and on-handle video capture, the AURORA XP platform empowers you to act decisively in critical moments.

Engineered for Urgent Intervention

When a patient presents with a **foreign body**, you need tools that move **fast**, navigate **easily**, and deliver **uncompromising performance**. All **AURORA ER™** scopes now feature slimmer insertion tubes, giving you improved access and control during **high-stakes** emergency procedures—without increasing patient risk.

Despite their **compact** size, these scopes maintain generous instrument channels and can **focus** as close as 2mm, giving you the **precision** needed to retrieve objects from deep or **delicate** anatomy.

With our smallest video endoscopes now offering over **2 million pixels** of **high-definition** clarity, you'll have the visual confidence to identify, engage, and remove obstructions—**quickly and safely**—when time matters most.





Endoscopy System
components

Accelerating You To Better Diagnosis

AURORA ER

XP-2PER LED FHD Video Processor

Ready When Every Second Counts

In emergency situations, visualization isn't optional—it's critical. Whether you're managing a respiratory obstruction, retrieving a foreign body, or performing a rapid diagnostic in the field, **AURORA ER** delivers the clarity and control you need when time and precision matter most.

Built for What's Next in Animal Health

As leaders in veterinary imaging, we continue to push the boundaries of technology—because better visualization leads to better outcomes. The **AURORA ER** platform introduces next-generation optics and intelligent workflow enhancements that help you respond faster, work smarter, and care better.

Visualize Success with TrueColor™ FHD Imaging

- Real-time 1080p high-definition image quality in 70 frames per second
- Up to 4x digital magnification for enhanced detail
- 40W LED light source delivers clean, white light—comparable to 175W xenon

Seamless Capture and Case Management

- Video and still image capture directly from the scope handle
- Stores files in FHD JPEG and MOV formats
- Pre-load up to 15 patient profiles to streamline daily casework



XP-VS1500 FHD Video Endoscope

AURORA ER



In small animal emergency cases, time and clarity are everything. This 1.6-meter video endoscope is optimized for rapid foreign body retrieval—combining a sub-9mm diameter with a generous working channel to navigate the GI tract efficiently, even in challenging anatomy.

Engineered with our proprietary Graduated Stiffness™ Technology, the scope maintains control during complex maneuvers without sacrificing flexibility—reducing procedure time and improving patient outcomes when it matters most.

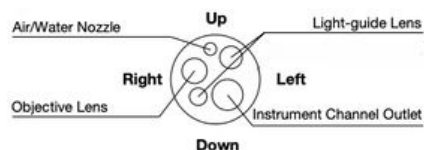
Specifications

Optical System

<u>Field of View:</u>	<u>140°</u>
<u>Direction Of View:</u>	<u>Forward</u>
<u>Depth Of Field:</u>	<u>3-100</u>

Insertion Section

<u>Distal End Diameter:</u>	<u>8.3mm</u>
<u>Distal End Enlarged:</u>	



<u>Insertion Tube Diameter:</u>	<u>8.0mm</u>
<u>Working Length:</u>	<u>1600mm</u>

Instrument Channel

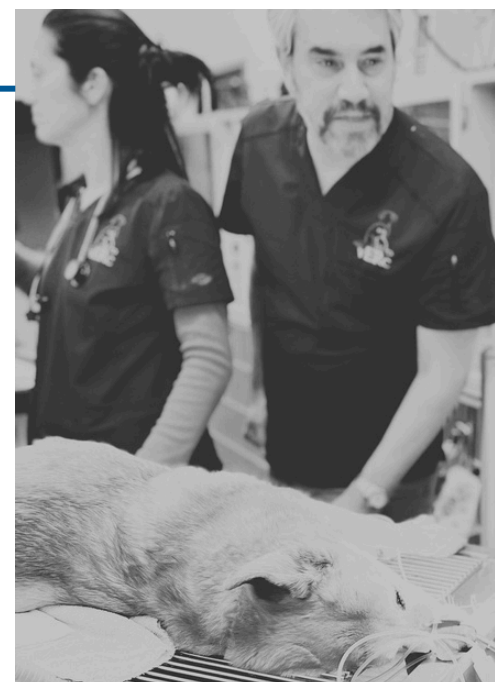
<u>Inner Diameter:</u>	<u>2.8mm</u>
------------------------	--------------

Bending Section

<u>Up:</u>	<u>210°</u>
<u>Down:</u>	<u>90°</u>
<u>Left/Right:</u>	<u>100°</u>

Pixel Count

2.0 Million



XP-VS1200 FHD Video Endoscope

AURORA XP



When every second counts—and the anatomy leaves no room for error—this ultra-compact video endoscope delivers unmatched precision. Perfect for foreign body retrieval in small patients, it combines full 4-way angulation with a 2mm instrument channel, giving you therapeutic reach where most scopes simply can't go.

Slim enough for the tightest spaces yet fully equipped for real intervention, its weighted distal tip aids natural advancement, keeping your hands steady and your focus sharp—so you can retrieve quickly, cleanly, and with total control.

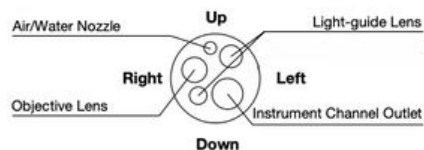
Specifications

Optical System

<u>Field of View:</u>	<u>160°</u>
<u>Direction Of View:</u>	<u>Forward</u>
<u>Depth Of Field:</u>	<u>3-100</u>

Insertion Section

<u>Distal End Diameter:</u>	<u>6.3mm</u>
<u>Distal End Enlarged:</u>	



<u>Insertion Tube Diameter:</u>	<u>5.9mm</u>
<u>Working Length:</u>	<u>1200mm</u>

Instrument Channel

<u>Inner Diameter:</u>	<u>2.0mm</u>
------------------------	--------------

Bending Section

<u>Up:</u>	<u>210°</u>
<u>Down:</u>	<u>90°</u>
<u>Left/Right:</u>	<u>100°</u>

Pixel Count

2.0 Million

1080p

FULL HD



Accelerating You To Better Clinical Outcomes

AURORA XP

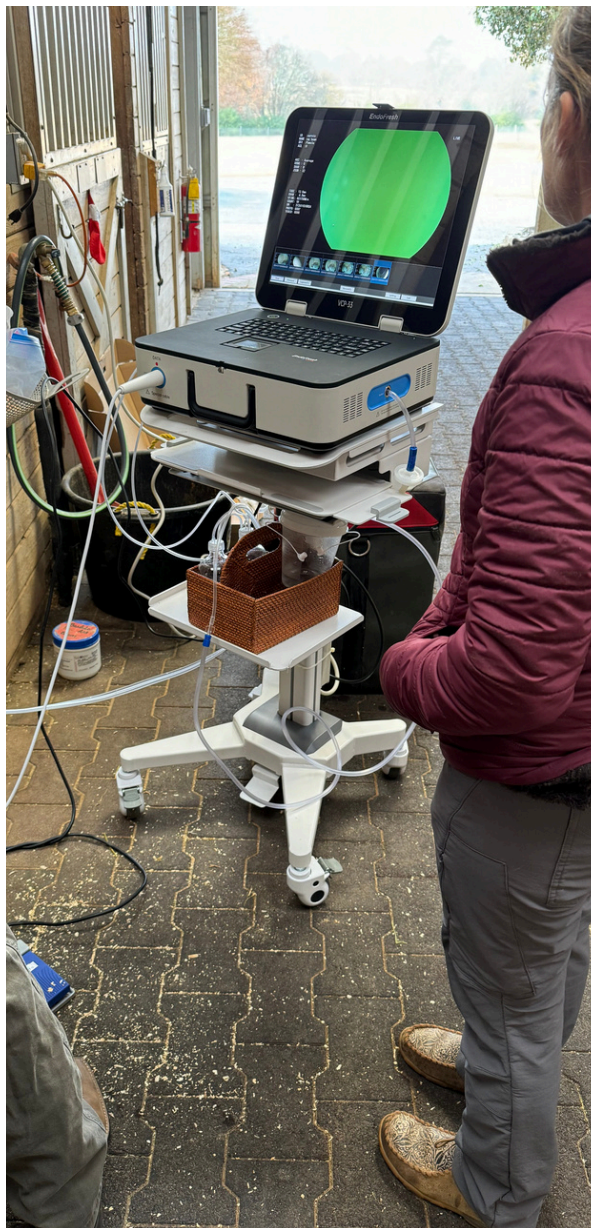


Accessories

Instruments, Carts, Storage and Reprocessing

XP-C2 Endoscopy Trolley Cart

Equipment Mobility



XP Supertrolley Series

Compact. Capable. Clinic-Ready.

The XP-C2 Supertrolley is purpose-built to support the XP-2PER FHD Video Processor and PERIOCAM platforms—delivering essential mobility and streamlined organization in a compact footprint. With a 100cm x 24cm profile, it saves floor space while offering efficient load capacity for tight clinical workflows.

Designed for quiet performance and smooth operation, the XP-C2 features EZ Glide™ drawers, silent casters, and a single-switch power strip for quick system access. The adjustable shelf and 27lb-rated monitor arm support make it adaptable to your preferred setup.

Compatible with a full range of attachable accessories, the XP-C2 keeps your most-used components close at hand—so you can stay focused on patients, not equipment.

Built by:



Video Display Technologies



32" FHD Display

- 60 Hz Refresh Rate, 8 ms Response Time, IPS Panel
- HDMI 2.0
- 100 x 100 mm (3.9 x 3.9 in) VESA Mount
- Tilt; Adjustable



LG

Endoscope Reprocessing

Simplify The Disinfection Process



Rutledge Medical offers a complete line of reprocessing solutions to support simplified, effective biosecurity protocols in veterinary practice. From high-level disinfectants and enzymatic cleaners to sterile rinse solutions, every chemistry is carefully selected to meet the demands of modern endoscopy while protecting your investment in equipment.

Our selection of instrument cleaning brushes, scope-safe soaking tubs, and leak testing tools ensures compliance with best practices—without adding unnecessary complexity to your workflow. Whether you're managing high case volume or building a protocol from the ground up, Rutledge Medical delivers everything you need for safe, consistent reprocessing—all in one place.

REPROCESSING AN ENDOSCOPE

A 7-step guide for animal healthcare professionals

- 1 Pre-Cleaning**
Wipe insertion tube with a damp cloth and suction enzymatic detergent through endoscope.
- 2 Leak Testing**
Submerge endoscope in water and use a leak tester to verify if it is watertight.
- 3 Manual Cleaning**
Soak all debris from endoscope with a sponge and brush channels following manufacturer's instructions.
- 4 High-Level Disinfection**
Soak endoscope in a high-level disinfectant according to manufacturer's instructions.
- 5 Rinsing**
Thoroughly rinse endoscope and purge water through all channels.
- 6 Drying**
Use a clean lint-free cloth to dry channels. Purge all channels with minimum 30ccs 190 alcohol and equipment room air.
- 7 Storage**
With scope and umbilical plug hanging vertically on wall-mounted rack or hanger.

Metrex
INFECTION PREVENTION

Endoscope Storage Solutions

Racks, Cases and Cabinets



- Available in premium powder-coated steel or clear acrylic, our 3-scope wall hangers offer clean, durable storage
- Single-scope holders feature padded arms to protect delicate components
- Installs easily with a standard cordless drill—*no specialty tools required*
- Custom cabinets available with options like UV/LED disinfection, key fob locks, powered ventilation, custom graphics, and more



Suction Systems

Vacuum Connected Directly To The Scope



DYNAREX™ Resp-Care Aspirator

- Electronic Pressure Sensing
- Adjustable Suction Pressure Valve
- Up to 550 mHg Flow Rate
- Attached Container Rack
- Wire Wrap for Power Cord

ARTEMIS™ Animal Health

Endoscopic Pathology Accessories

endoscopes.vet/shop  **Artemis**
animal healthcare



DUNCAN Roth Style Retrieval Basket

2.4mm dia | 5 in basket | 2300mm long



DUNCAN Rat Tooth Style Retrieval Forceps

1.8mm/2.4mm dia | 5 in basket | 2300mm long



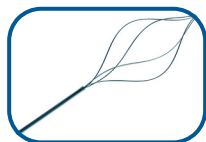
DUNCAN Pronged Retrieval Device

1.8mm/2.4mm dia | 5 in basket | 2300mm long
4 and 5 prong available



WRANGLER Retrieval Snare

2.4mm dia | large oval snare | 2300mm long



DUNCAN Metal Retrieval Basket

2.4mm dia | 6mm basket | 2300mm long

Artemis Animal Health is your trusted source for high-quality endoscopy accessories designed specifically for foreign body retrieval. From graspers and retrieval baskets to suction adapters and multi-modality tools, we offer a full range of reliable instruments compatible across platforms. Built for performance and precision, our accessories help you retrieve more—faster, safer, and with fewer complications.



GRIZZLY Biopsy Forceps Needle

1.8-2.4mm dia | 180-230cm long



GRIZZLY Gator Jaw Forceps

2.4mm dia | 230cm long



GRIZZLY Biopsy Forceps Smooth

1.8-2.4mm dia | 180-370cm long



A ginger cat is curled up and sleeping on a rough, grey stone wall. The cat's fur is a mix of orange and white, and its eyes are closed. In the background, the head of a light-colored dog is visible, looking towards the camera. The background is filled with green foliage, and the scene is lit with warm, golden light, suggesting late afternoon or early morning.

Better Patient Outcomes

for the love of animals



rutledge

2828 E 51st Street
Suite 302
Tulsa, Oklahoma 74105

+1 (888) **ENDOVET**
@thescopeguys - ig, fb, x
endoscopes.vet

The contents herein are not approved by the U.S. Food and Drug Administration (FDA) for use in human medicine. These products are intended for veterinary use only.

