

*Since 1994*

**AOHUA**

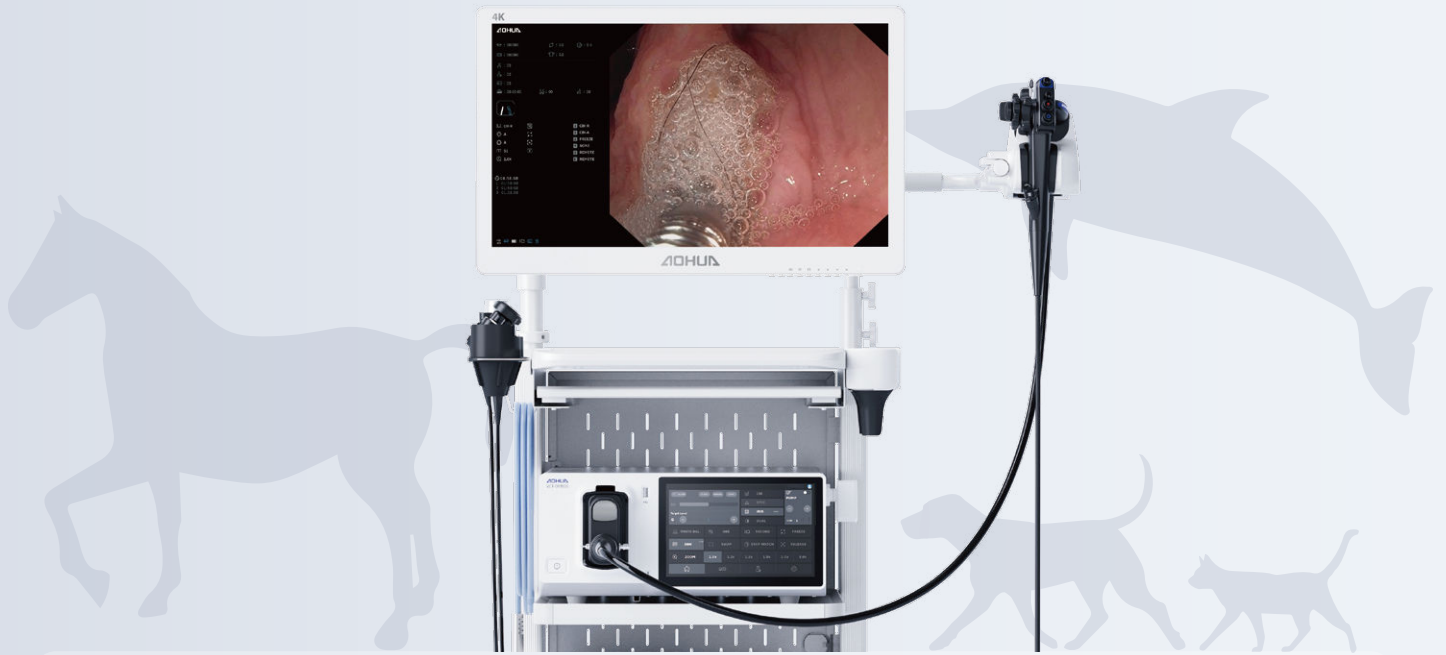


**new**

# VET-OR1800

## 4K Veterinary Endoscopy System

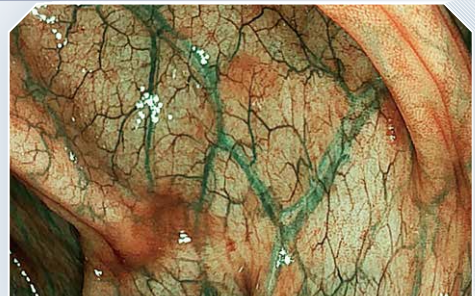
# Illuminating New Standards in Veterinary Endoscopy



## 4K Technology

The Next Generation of Endoscopy Has Arrived

- **Elevate diagnostic clarity** — delivers exceptional tissue visualization through 4K ultra-high-definition display.
- **True-to-life revelation** — enhances interpretation confidence by showcasing fine anatomical structures and vivid color fidelity.



## Multiple Image Enhancement

Powered by AI algorithms

- **Elevate diagnostic precision** — delivers sharper clinical insight through AI-powered image enhancement.
- **True-to-life detail** — reveals subtle tissue textures and vascular structures, supporting more precise observation and confident decision-making.





## 3 LED Light Source

### Advanced Multi-LED Illumination System

- **Brighter, clearer visualization** — the 3-LED light source provides enhanced illumination for improved visibility and accurate diagnosis.
- **High-intensity lighting** — delivers sufficient brightness even in large cavities such as the abdominal or thoracic area.
- **More than 30,000-hour lifespan** — reduces replacement frequency and long-term operational costs.

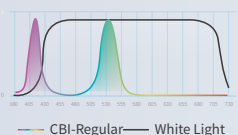


## 3 CBI Modes

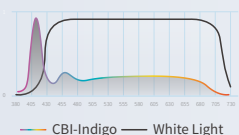
### See Beyond the Surface

- **Compound Band Imaging (CBI)** — enables observation of changes in the morphology of lesioned mucosal glands and microvascular structures through optical staining.
- **Elevate diagnostic precision** — delivers sharper clinical insight through AI-powered image enhancement.
- **Reveal the unseen** — compound band optical enhancement highlights mucosal and vascular structures for more accurate diagnosis.

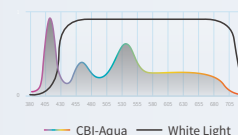
CBI Regular/CBI-R



CBI Indigo/CBI-D



CBI Aqua/CBI-Q





# All Scopes One System

Seamlessly integrate flexible, rigid and disposable endoscopes

## FHD Flexible Endoscopy Solution

### VET-7828R

Gold-Standard 7.8mm scope with a large 2.8mm channel and unmatched Full-HD clarity.



Automatic  
Startup



Multi-functional  
Handle

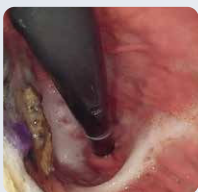


Large Instrument  
Channel



	Model	Working Length (mm)	Diameter of Insertion tube (mm)	Diameter of Instrument (mm)	Range of Bending	View of Field
new	VET-2812R	1000	2.8	1.2	U180°D130°	120°
new	VET-6028R	1500	6.0	2.8	U210°D90°L100°R100°	120°
new	VET-7828R	1500	7.8	2.8	U210°D90°L100°R100°	120°
	VET-FHD15	1500	9.8	2.8	U210°D90°L100°R100°	145°
	VET-FHD33	3300	9.8	2.8	U210°D90°L100°R100°	145°
	VET-FHD35	3500	12.8	3.7	U180°D180°L160°R160°	145°

Gastroscopy



Gastroscopy



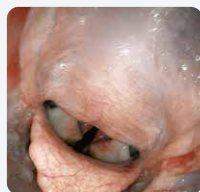
Duodenoscopy



Bronchoscopy



Laryngoscopy





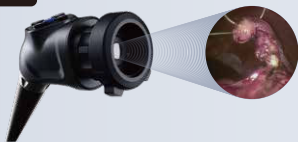


## 4K Rigid Endoscopy Solution

### 4K Camera Head



CH-1800



### Surgical Equipments

Heatflow 50 CO2 Insufflator



AniSeal Energy Platform



Remote  
Operation



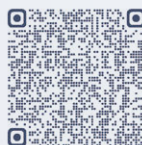
Replaceable  
Design



Optical Zoom  
Coupler



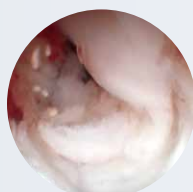
Scan to discover more details of  
Rigid Endoscopy Kit and Sets



Rhinoscropy



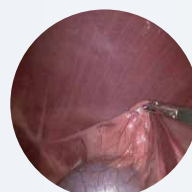
Cystoscopy



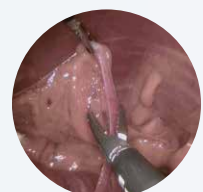
Urethroscopy



Laparoscopy



Laparoscopy



# Disposable Endoscopy Solution

Your trusted partner in expanding veterinary services and reducing costs



	Model	Working length (mm)	Diameter of distal end (mm)	Diameter of instrument channel (mm)	Range of bending	Insertion Tube Rotation
HD Disposable Endoscope	DEV-4922H	600	4.9	2.2	U210°D180°	L90° R90°
	DEV-5832H	600	5.8	3.2	U210°D180°	L90° R90°
Practical Disposable Endoscope	DEV-3112	600	3.1	1.2	U210°D180°	L90° R90°
	DEV-3822	600	3.8	2.2	U210°D180°	L90° R90°
	DEV-4932	600	4.9	3.2	U210°D180°	L90° R90°

# Intelligent by Design

Smart solutions to elevate efficiency and optimize performance



## 10.1-Inch Intuitive Touch Panel

**Centralized Touch Interface:** Manage the entire system intuitively through one unified 10.1-inch touchscreen.

**Intelligent Workflow:** Simplify complex operations and streamline clinical workflows with smart, interactive control.



## User-Friendly Design

**Personalized Presets:** Save individual settings for one-click switching in shared use.

**Custom Shortcuts:** Assign frequent functions to handle buttons for instant access.

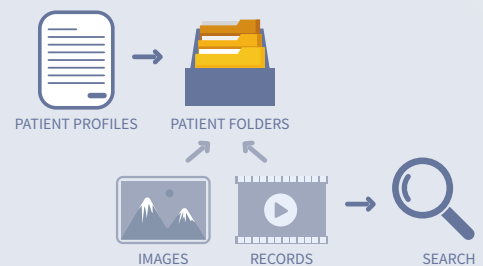
**Global Interface:** Use instantly in 9 languages, with more added via OTA updates.



**Comprehensive Profile Management:** Easily create, select, and edit detailed patient profiles for complete image and record keeping.

**Instant Smart Search:** Quickly locate any patient record with efficient search, ensuring fast access during busy clinical hours.

**Automated Documentation:** The system auto-generates dedicated folders for each patient's images and records, guaranteeing organized and rapid retrieval.



## Patient System

**Local Storage:** 512GB built-in memory for direct, convenient access.

**USB Storage:** Automatically saves to both local memory and USB drive when connected.

**Advanced DICOM Transfer:** Enables automatic, standardized image transfer to PACS via LAN integration.



\*Engineer support is required to ensure proper integration because of different PACS

Categories	Procedure	Total Charges	Procedures per month	Revenue per month
Internal Medicine	Bronchoscopy			
	Endourology Exam			
	Endourology Intervention			
	GI Endoscopy- Lower			
	GI Endoscopy- Upper			
	Rinoscopy			
	Vaginoscopy			
Dermatology	Canine TCI			
	Otoscopic Exam			
	Otoscopic Deep Cleaning			
Surgery	Arthroscopy			
	Lap Spay			
	Laparoscopic Exploratory			
	Long Lap Surgery			
	Thoracoscopy			
Avian and Exotic Pets Endoscopy	Oroscopy			



Instagram



Linkedin



Facebook



Youtube

## Aohua Endoscopy Co.,Ltd.

**E-mail:** vets@aohua.com

**Website:** www.aohuavet.com/en

ISO 9001/ISO 13485 Certified  
v4.1\_2512

### China

No.66, Lane133, Guangzhong Road,  
Minhang District, Shanghai

Tel : 021-5221-0929

### Germany

Fichtenstrasse 27,  
Brunnthal, Munich

Tel : +49 (0) 81 04/8908-10